

Vision Zero PCO E-Citations

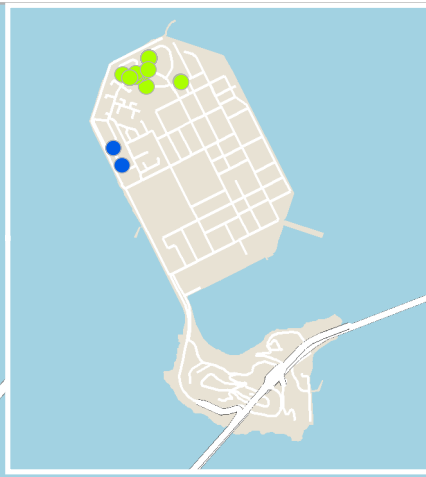
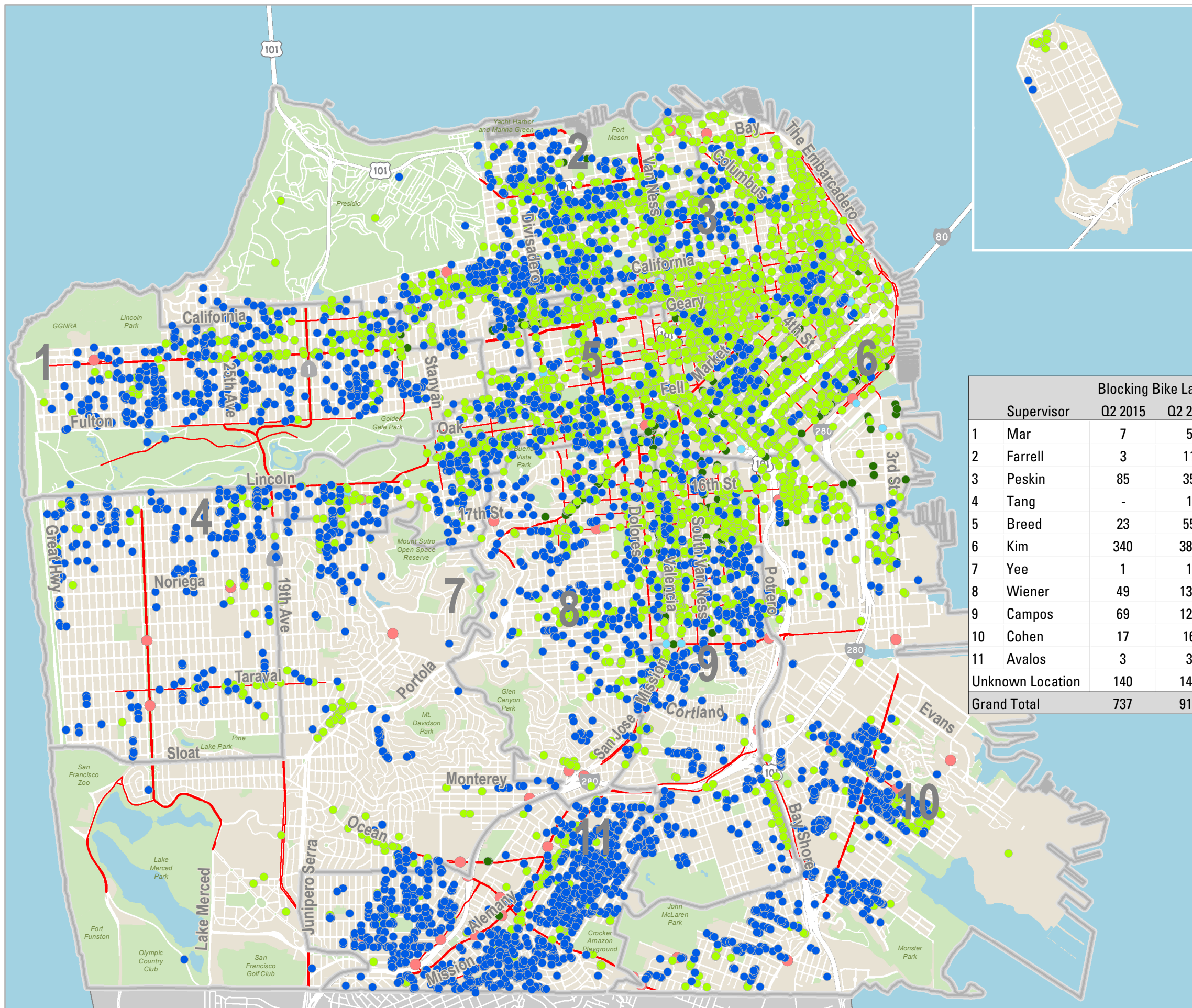
April-June 2016

Vision Zero-related e-citations recorded by SFMTA Parking Control Officers using handheld devices between April-June 2016.

Vision Zero Violations

- Blocking Bike Lane
- Double Parking
- Intersection Gridlock
- Blocking Sidewalk
- Supervisor Districts
- Ped/Bike High Injury Intersection
- Vision Zero High Injury Network

Supervisor	Blocking Bike Lane		Double Parking		Intersection Gridlock		Blocking Sidewalk	
	Q2 2015	Q2 2016	Q2 2015	Q2 2016	Q2 2015	Q2 2016	Q2 2015	Q2 2016
1 Mar	7	5	248	258	27	-	528	410
2 Farrell	3	11	1424	932	7	4	530	426
3 Peskin	85	35	2056	1177	86	319	286	118
4 Tang	-	1	82	51	-	-	229	270
5 Breed	23	55	671	681	9	2	371	312
6 Kim	340	380	2232	1833	3329	1884	185	187
7 Yee	1	1	91	84	1	-	146	131
8 Wiener	49	130	343	393	3	-	363	267
9 Campos	69	129	785	602	-	7	514	393
10 Cohen	17	16	390	398	-	-	1039	727
11 Avalos	3	3	154	171	-	-	946	1252
Unknown Location	140	147	234	237	154	13	158	171
Grand Total	737	913	8710	6817	3616	2229	5295	4664



Scale 1:50,035

Date Saved: 9/1/2016

For reference contact: anna.harkman@sfmta.com

By downloading this map, you are agreeing to the following disclaimer: "The City and County of San Francisco ("City") provides the following data as a public record and no rights of any kind are granted to any person by the City's provision of this data. The City and County of San Francisco ("City") makes no representation regarding and does not guarantee or otherwise warrant the accuracy or completeness of this data. Anyone who uses this data for any purpose whatsoever does so entirely at their own risk. The City shall not be liable or otherwise responsible for any loss, harm, claim or action of any kind from any person arising from the use of this data. By accessing this data, the person accessing it acknowledges that she or he has read and does so under the condition that she or he agrees to the contents and terms of this disclaimer."

