



2024 Traffic Fatality Monthly Report

As of 1/16/2025¹, the included table summarizes November traffic fatalities and 2024 year to date (YTD) traffic fatalities (through the end of December 2024) which adhere to the San Francisco Vision Zero traffic fatality case definition.² For comparison purposes, December 2019-2023 traffic fatalities and YTD totals are provided. The Vision Zero Fatality Reporting Map has been updated to reflect the most recent data ([map](#)) and this report will be posted on the website (<http://visionzerosf.org/maps-data/>).

Vision Zero Traffic Fatalities through December of Each Year*

Traffic Victim	2024		2023		2022		2021		2020		2019	
	Dec Count	YTD Total	Dec Count	YTD Total	Dec Count	YTD Total	Dec Count	YTD Total	Dec Count	YTD Total	Dec Count	YTD Total
People Killed While Walking	2	24	2	18	4	20	0	13	3	12	1	17
People Killed While Cycling	1	3 [†]	0	0	0	1	0	2	0	2	0	1
People Killed While Riding a Standup Powered Device	0	0	1	2	0	4	0	1	2	2	0	0
People Killed While Riding in a Motor or Transit Vehicle	1	5	0	2	0	2	0	1	0	1	0	2
People Killed While Riding outside a Motor or Transit Vehicle	0	0	0	0	0	0	0	0	0	1	0	1
People Killed While on a Moped	0	0	0	1	0	2	0	0	0	0	0	0
People Killed While on a Motorcycle	0	4	0	1	1	5	1	8	1	7	0	1
People Killed While Driving	1	6	0	2	1	5	0	2	0	5	1	7
TOTAL	5	42	3	26	6	39	1	27	6	30	2	29

[†] One bicyclist fatality is still under investigation for December.

* Data do not reflect freeway deaths occurring on grade-separated freeways/roadways under Caltrans jurisdiction in the City and County of San Francisco, which are tracked and mapped separately. They include:

2023: 2 people walking, 3 people riding in vehicles

2022: 2 people walking, 3 people on motorcycles, 3 people riding in vehicles

2021: 3 people walking, 1 person on a motorcycle, 3 people driving

2020: 2 people walking, 2 people on motorcycles, 1 person riding in a vehicle

2019: 2 people walking, 2 people on motorcycles, 4 people driving, 3 people riding in vehicles

2018: 1 person walking, 2 people on motorcycles, 1 person riding in a vehicle

2017: 3 people walking, 1 person on a motorcycle, 2 people driving

2016: 3 people walking, 2 people on motorcycles

¹ Due to staffing shortages at the OCME, the turnaround time to confirm VZ fatalities is delayed until those staffing vacancies are backfilled. July through December 2024 figures are preliminary until fully confirmed by OCME reporting.

² SFDPH, SFMTA, and SFPD. 2020. Vision Zero Traffic Fatality Protocol: https://www.sfdph.org/dph/files/EHSdocs/PHES/VisionZero/Vision_Zero_Traffic_Fatality_Protocol.pdf



Data Source: Motor Vehicle Death Reports, Office of the Chief Medical Examiner 2024, and SFPD Reports.

The Metropolitan Transportation Commission’s (MTC) Equity Priority Communities³ highlight areas with high concentrations of poverty and vulnerable populations. For reference: In 2023, 42% (n=11) of fatalities occurred in an Equity Priority Community, 50% (n=10) of those killed were seniors,⁴ and 65% (n=17) of fatalities occurred on the High Injury Network.⁵

In 2024 (through 12/31/2024):

Traffic Victim	YTD Total	Count in Equity Priority Communities	Percent in Equity Priority Communities	Count Seniors	Percent Seniors	Count on High Injury Network	Percent on High Injury Network
People Killed While Walking	24	6	25%	6	25%	12	50%
People Killed While Cycling	3	0	0%	3	100%	1	33%
People Killed While Riding a Standup Powered Device	0	0		0		0	
People Killed While Riding in a Motor Vehicle	5	0	0%	1	20%	3	60%
People Killed While Riding outside a Motor Vehicle	0	0		0		0	
People Killed While Riding on a Moped	0	0		0		0	
People Killed While on a Motorcycle	4	3	75%	0	0%	2	50%
People Killed While Driving	6	2	33%	1	17%	1	17%
TOTAL	42	11	26%	11	26%	19	45%

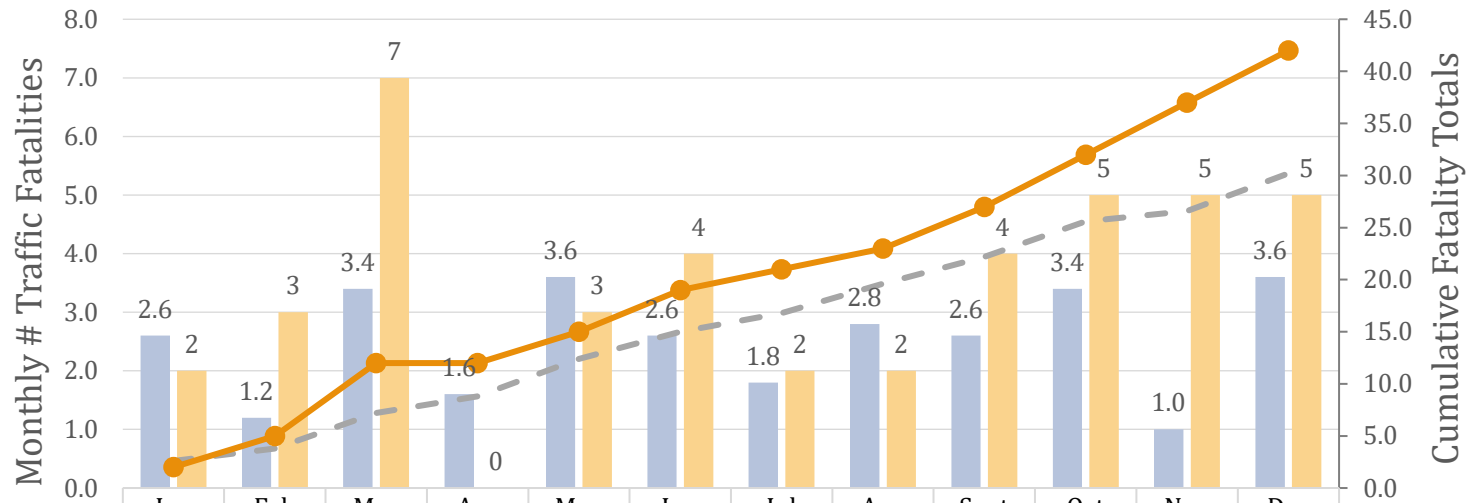
³ Details of the 2021 Equity Priority Communities boundaries are available at: <https://mtc.ca.gov/planning/transportation/access-equity-mobility/equity-priority-communities>

⁴ Defined as people age 65 and up.

⁵ This memo uses the 2022 VZ HIN boundaries. San Francisco’s VZHIN represents the 12% of San Francisco streets where 68% of severe and fatal traffic injuries occurred between 2017-2021. More details available at: <https://sfgov.maps.arcgis.com/apps/webappviewer/index.html?id=fa37f1274b4446f1bddd7bdf9e708ff>

This chart displays Vision Zero traffic fatalities over 2024 at monthly intervals as well as five-year cumulative and monthly average totals (2019-2023), providing a snapshot of traffic fatality trends in San Francisco.

Vision Zero Traffic Fatalities: 2024 and Five-Year Averages



■ Five-year Average Monthly Total	2.6	1.2	3.4	1.6	3.6	2.6	1.8	2.8	2.6	3.4	1.0	3.6
■ 2024 Monthly Total	2	3	7	0	3	4	2	2	4	5	5	5
— Five-year Average Cumulative Total	2.6	3.8	7.2	8.8	12.4	15.0	16.8	19.6	22.2	25.6	26.6	30.2
● 2024 Cumulative Total	2	5	12	12	15	19	21	23	27	32	37	42

Contact

For questions or comments regarding traffic fatalities, please contact Iris Tsui at iris.tsui@sfdph.org.